

CT-Guided Liver Ablation using the Access Cube

Summary

Microwave ablation of HCC tumor with double-oblique trajectory using the Access Cube as navigation aid

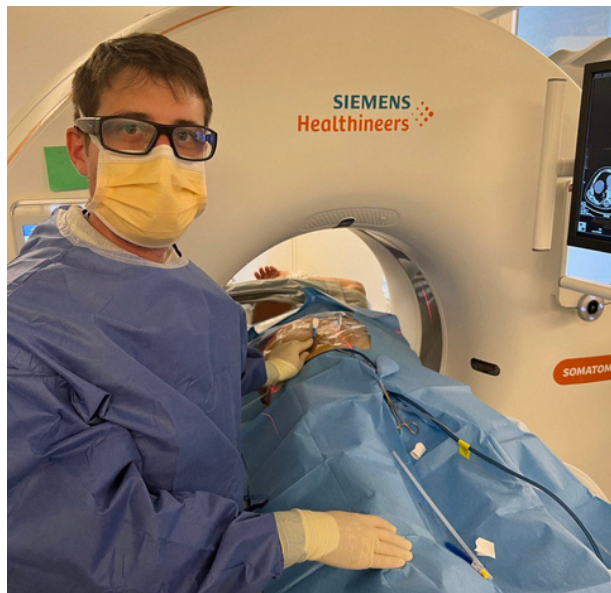


Figure 2: Microwave ablation

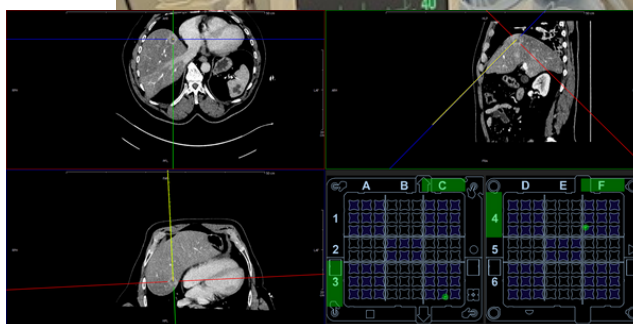


Figure 1: Planning scan and patient position

Patient Profile

70 year old male patient with hemochromatosis and singular HCC in segment VIII.

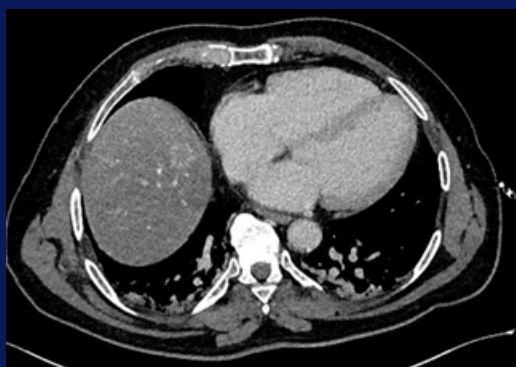


Figure 3: Axial CT scan prior to ablation

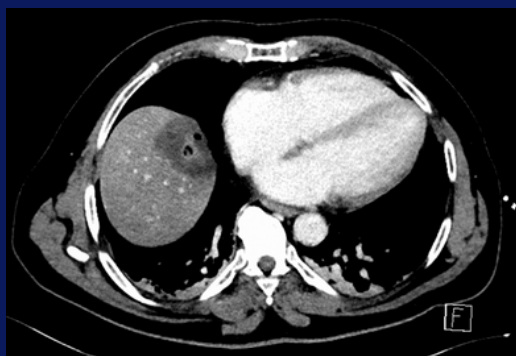


Figure 4: Post-ablation scan

Procedure

The access route was planned using the Cube Navigation System, with entry point below the ribcage. Imaging and needle placement was done in expiration while patient was intubated (Figures 1, 3). Needle was placed approximately 5 cm into the liver before the Access Cube was removed to enable full access for the antenna.

Under CT fluoroscopic control, the needle was advanced into the lesion without need for additional correction and a first ablation was performed (Figure 2).

A second ablation was performed adjacent to the first in order to cover the entire lesion. For this, no additional navigation was required.

Result

A post-ablation scan confirmed successful ablation of the entire lesion (Figure 4). Performing physician Dr. Med. Lorant Szabo was impressed with the ease of use and accuracy of the Cube Navigation System during this procedure.

Contact Us

Medical Templates
info@medicaltemplates.ch
www.medicaltemplates.ch

Team

Dr. Med. Lorant Szabo and team
Klinik Hirslanden, Zurich, Switzerland